



2 Bay

Kennel Assembly Instructions



Parts list:

- 1 x Door Assembly
- 1 x Left Panel
- 1 x Middle Panel (This will either be a left or right hand panel, the middle panel can be either)
- 1 x Right Panel
- 1 x Rear Panel
- 2 x Skids (feet)
- 1 x 60 x 30mm bearer (3 x access holes in 1 side only)
- 1 x 30 x 30mm bearer (3 x access holes in 1 side only)
- 3 x 30 x 30mm floor braces (3 x bolt holes all the way through)
- 6 x Angle braces
- 6 x 1.2m roof sheets (Note: discard blue cover sheet)
- 2 x fibreglass composite floors
- Pinchweld

Accessories Kit:

- 1 x Pair Safety Gloves
- 1 x Pair Safety Glasses
- 1 x 100mm Driver Bit
- 1 x Tape Measure
- 2 x Spanners
- 13 x 75mm M10 bolts
- 6 x 50mm M10 bolts
- 19 x M10 washers
- 60 x Self-tapping metal screws
- 2 x 30 x 60mm end caps
- 4 x L brackets

NOTE: Ensure to use safety equipment (safety glasses and gloves) when assembling this unit and employ a 2-person lift where required.

NOTE: DO NOT clean your unit with bore water, bleach or any other chemicals that will affect the rust prevention treatments on the components of this unit or your warranty will be void.

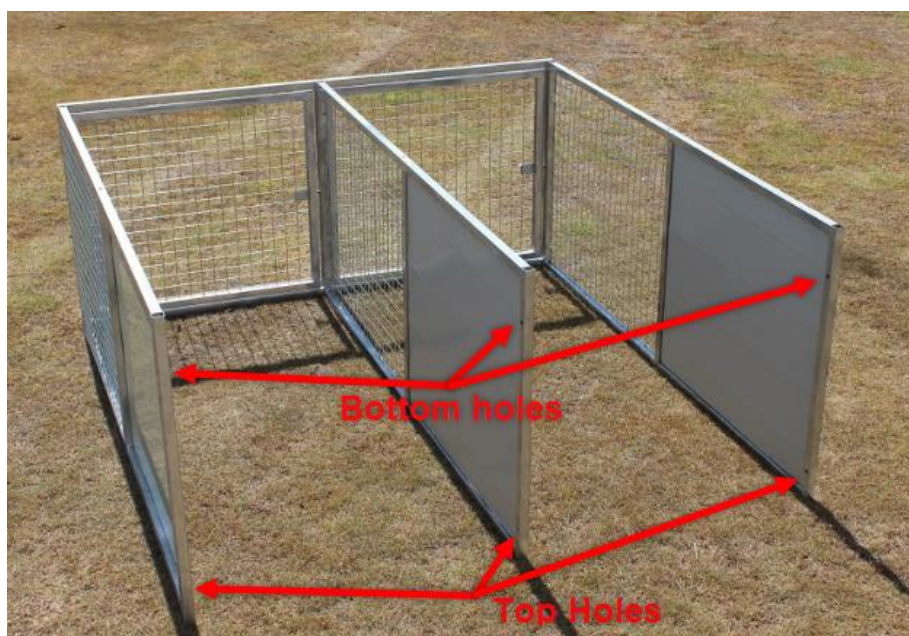
Assembly Instructions

Step 1.

Select an area as flat as possible to assemble this unit. In the first steps of assembly, the kennel is assembled upside down. Referencing the picture below, you can identify the top from the bottom of the frames by the distance the bolt holes are from the edges of the frame. The tops of the frames have bolt holes 60mm in from the edge and the bottom have holes 120mm in.



Step 2. To start assembly, the bottom of the frames should be facing up, with the large hole distance at the top. Ensuring the left and right panels have the green side of the colorbond sheet facing outwards (screws to the inside) attach the MESH END of the 3 panels to the gate assembly using M10 x 75mm bolts. Finger-tighten only.



NOTE: If you choose to leave the middle divider out at this stage or remove it later on, we strongly recommend you fill the gap it leaves between the 2 floors with an appropriate material, noting that it shouldn't be metal or any material that can get hot.

Step 3. Align the tabs on the rear panel assembly with the bolt holes of the other end of the 3 panels and secure using M10 x 50mm bolts. Finger-tighten only.



Step 4.

Measure the diagonal corners of the unit, adjusting until the measurements are the same and the frames are square. Then tighten all bolts firmly.



Step 5.

Insert the end of the skids into the frame of the back panel, leaving the front end resting on top of the frames (not inside). Align the floor brace holes with the bolt holes on the **INSIDE** of the skids and attach the rear floor brace using 75mm M10 bolts (NOTE: the front and rear floor braces only bolt into the skids at each end). Finger-tighten bolts.



Place the other ends of the skids into the frame and secure the front floor brace to the **INSIDE** of the skids in the same manner. There are 2 sets of holes that the middle floor brace can bolt to – you can bolt this to either the front or back set of holes, noting the middle floor brace bolts into the middle panel as well. Finger-tighten only.

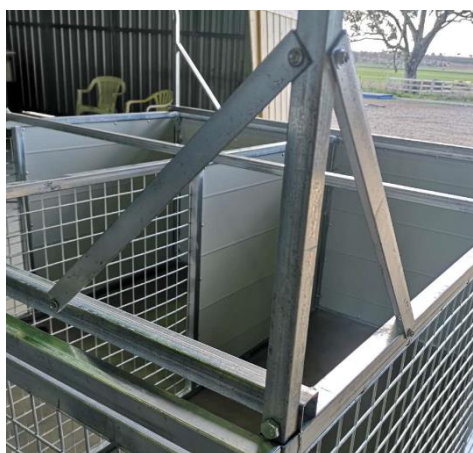


Recheck diagonal measurements are still equal. If they are not, adjust until unit is square. Then tighten all bolts firmly.

Step 6.

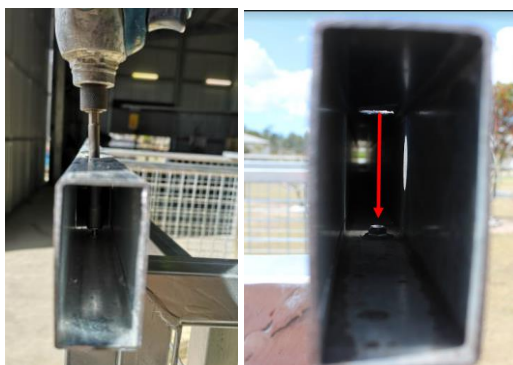
Using the self-tapping screws provided, screw on the 'two way' angle braces to the front of the skids and a single lateral brace at the rear, all braces should be at a 45 degree angle between the skid and frames.

- These angle braces are pre-drilled for ease. Ensure to screw through these pre-drilled holes when mounting the angle braces
- The front and rear braces screw to the floor bearers and the side braces screw to the frame. There will be a small amount of torque on these braces when screwed up firmly



Step 7.

Turn the unit over so it is standing upright. Centre the front bearer on top of the gate frame with the holes facing upward – **Ensure the bearer overhangs the same length each side of the gate frame.** Using the 100mm driver bit supplied, screw the bearer to the top of the gate frame through the 3 pre-drilled access holes using the self-tapping screws.



The position of the middle bearer is 1080mm from the **front of the front bearer to the front of the middle bearer**.

- Screw the middle bearer to the tops of each panel in the same fashion as the front bearer, ensuring equal overhang each side.
- If 30 x 60 end caps are supplied, screw them to the ends of the front bearer screwing from the back side of the bearer through the pre-drilled hole.
- Then use the self-tapping screws to secure the 4 x L brackets to the bearers and outer frames

NOTE: If you will want to remove the middle divider at any stage after assembly, DO NOT screw the middle roof bearer to the middle divider (only screw to both outer frames).



Using the gloves provided, insert the floors through the doors, being careful not to pinch your fingers. To remove the divider after assembly, remove 1 floor, remove the 5 bolts holding the middle divider in place and remove the divider through the front door.

Step 8.

All sheets are 1200mm long and can be used in any position.

1. First place sheets on the rear side of the kennel with the overlap side of the sheet facing to the outside. The front of the sheet must overhang 60mm past the middle bearer.



- Place the next sheet to overlap the last sheet, ensuring the overlap side of the sheet is on top of the first sheet. Repeat with the third sheet and adjust the amount of overlap to centre the sheets on the kennel, ensuring equal overhang each side that the roof section is square with the kennel and there is 60mm overhang past the middle bearer.



- Starting from the same side as the rear sheets, place the first front sheet **ON TOP** of the rear sheets, ensuring the overlap side is facing out (same as the rear sheets). Allow a 10mm overhang at the front bearer. Repeat the process for the next 2 sheets in the same sequence as the rear sheets.



- Ensure the front and rear sheets align and centre the sheets to have equal overhang each side, rechecking for a 10mm overhang on the front and being aligned through the sheet overlaps sections.



When roof sheets are correctly in place, screw the sheets to the bearers and rear frame with the self-tapping screws provided. **Note - there are enough long roof screws to screw through each ridge section across the middle only (on the overlap of front and rear sheets).** The shorter screws are designed to be used in the gullies front middle and back. Be mindful not to screw through the roof sheets into the access holes in the top of the bearers.

NOTE: Take precautions as the edges of roof sheeting can be very sharp and be sure to remove the metal filings (created from the screws) from the roof sheets when finished screwing on. Any foreign matter (metal filings, dirt etc.) left on top of the roof sheets will cause the roof sheets to rust at the contact points.

Step 9.

Apply the pinch weld to the edges of the roof sheeting, ensuring to wear the gloves provided and taking extra precautions as the roofing sheets can be sharp. Please note – if you choose to apply the pinch weld to the rear of roof sheets, this can cause water to pool and drainage issues in some circumstances.

**Note:**

- These kennels are made with high quality galvanised steel, however rust can still form pending the kennel's environment. We recommend:
 - Do not clean with bore water, bleach or other chemicals
 - Do not allow animal waste to build up on steel components
 - Sometimes salt in the air, humidity and other environmental factors can cause rust. If you see any rust starting to form, we recommend you touch up with galvanised paint as soon as it is noticed
 - Do not allow unit to get wet in flat pack form